

THE BRIDGE

February 2025



Our thanks to Andrew Pearson for sending us this recent photo of a sunset in Shilton

This monthly magazine covers people and events in our area of the Cotswolds, and is delivered free of charge to residences and businesses in Aldsworth, Asthall, Asthall Leigh, the Barringtons, Bradwell Village, Burford, Field Assarts, Fordwells, Fulbrook, Holwell, Northleach, Sherborne, Shilton, Signet, Swinbrook, Taynton, Upton, Westwell, Widford and Windrush with a wider national and international readership.

Volume 16, Number 1, £1.50

BURFORD PROJECT



DESIGNER INSPIRED
STUDIO
150 The Hill
Burford OX18 4QU

OPEN 7 DAYS

Appointments please
01993 824690



KITCHENS
BEDROOMS
BATHROOMS

**DESIGNED - CRAFTED
COMPLETE INSTALLATION**

www.burfordkitchensandinteriors.co.uk



Architectural practice which combines sensitive, imaginative building and garden design with technical expertise and project management skills, all tailored to suit client requirements.

We operate within The Cotswolds, Woodstock and Oxford, and have a positive relationship with Local Authorities. Please call for an initial, no-obligation discussion and site visit.

Panton Architectural Design, Wood Farm Studio, Woodleys, Woodstock OX20 1HN

t: 01993 810704 e: post@pantondesign.info w: pantondesign.info



01993 220 579
burford@taylorandfletcher.co.uk

Taylor & Fletcher



SOLD

SOLD

SOLD



James Skinner
Residential Sales Manager



Alison Denny
Residential Sales



Celebrating 6 years in Burford

Providence House, 49 High Street, Burford, Oxfordshire, OX18 4QA



12th February 2025



This acknowledged leading music school brings a varied set of players of wind, brass and strings to perform ensemble pieces that will include :

Mozart Flute Quartet
Mendelssohn Quartet in A Minor
Ewald Brass Quintet no. 1 in D flat

It will be a varied and exciting programme from young players who will become the professionals of the future.

7:00 pm Burford School

Tickets £20

www.lenthallconcerts.co.uk

www.ticketsource.co.uk/the-lenthall-concert-society

EDITORS' NOTES

Sparking Off

A little while ago we received an email from WODC. In the preview box it was headed "Progress on electrifying the council." Now there's an idea we could all support, we thought. On opening the message we found the full heading was "Progress on electrifying the councils (sic) waste vehicle fleet continues with the addition of new battery powered vans". Very commendable, we thought, but not quite as exciting as the first version.

Ay up, midduck

We also received an email from Thames Valley Police warning us about Nottingham Knockers, people who try to sell bits and pieces from door to door. They say "the sellers may use quite intimidating tactics to sell, and have been known to be aggressive especially towards more vulnerable members of society."

As it so happens, one of the editors of this journal was born in that fine city, known as "The Queen of the Midlands", home to Lord Byron, Jesse Boot the chemist, D.H. Lawrence, Torvill and Dean and, er, Robin Hood (perhaps). That person was deeply hurt and indeed traumatised on behalf of the minority of the population born in places with an NG postcode. We are therefore calling on TVP through this column to investigate themselves for committing a hate crime and then prosecute themselves. And then cancel themselves. Enough of this persecution!

Lightening our Darkness



By the time you read this Christmas will have fast receded in the rear view mirror. We do agree with Peter Higgs' piece that the new Burford Christmas lights were very good. You can view a video journey through the lights on our website.

Man of the Month

This month we are featuring an interview with Charlie Maynard, the new Liberal Democrat for Witney. Just in case anyone thinks this shows political bias on the part of this magazine, we should point out that we interviewed his two immediate Conservative predecessors and we have for a long time included articles from our county and district councillors, regardless of their party allegiance. We also interviewed the Labour candidate in the last district council election.

And a Thank You

Many thanks to all of you who sent us seasonal greetings including positive comments about The Bridge. Such feedback does encourage and motivate us, and other volunteers involved with the magazine, very much. And for those who are critical about our content and presentation, please keep those comments coming as well as we do need to know what people like and don't like.



Can you spot the dachshund lighting up The Hill in Burford?

THANKS TO KARL LODGE

Burford welcomed the festive season in style in December with the grand switch-on of its spectacular Christmas lights. Last year's display, stretching down Burford Hill and lighting up the High Street, had truly captured the magic of Christmas and drew visitors from far and wide. Special thanks must go to Karl Lodge and his hardworking team, headed by Simon Blick and Daniel Bentley at Logical Project Solutions Ltd, who dedicated an entire week to creating this enchanting spectacle.

For the benefit of anyone who does not know Karl, he is the driving force behind Logical Project Solutions Ltd and has built an impressive legacy in the construction industry, specialising in architectural metalwork. He runs the business alongside his equally dedicated wife, Becky. A proud local of Burford, he is deeply passionate about supporting the town. So, a huge thank you to Karl and his team for their dedication and community spirit. Their hard work has not only brightened our streets but also boosted local trade, creating a festive atmosphere we'll all remember for years to come.

Michael Taubenheim

A lot of comment has been made about the creative window displays in Burford, particularly during the Christmas period. In case some of you were away and missed these displays a full description and photos are featured on our website. Here is a summary of the winning windows:

1. *The Cotswold Glass and Craft Shop.* The window profiled intricate glass art with traditional festive elements and delicate twinkling lights creating a magical scene with a centrepiece of a nativity scene.
2. *The Little Madhatter Emporium,* where the exquisite display featured theatre-style curtains framing a snowfall over an enchanting Nutcracker scene.
3. Third place was awarded to *Hugo Lovage Patisserie,* where the innovative display of delicious confection and meringue architecture delighted the judges and visitors alike.

A special mention was also given to the *Helen & Douglas Charity Shop.*

Many thanks to the Burford Chamber of Trade who organised this competition. It brought festive joy to Burford and also highlighted the town's creative spirit and vibrant community of shopkeepers and artisans. It's a tradition everyone hopes will grow in the years to come.

By Lynnette Derry on behalf of Michael Taubenheim

AND SO TO 2025... A NEW YEAR

Burford experienced a bright festive season courtesy of three industrious residents, Michael, Ken and Dan, working with the town council and the businesses in the town to purchase the lights, and Karl who organised the installation of them all along the High Street. They raised donations from businesses and residents and the council to buy the lights, and the businesses paid for the electricity to power them.

The effect was brilliant, augmented by the shop window festive displays too. Residents, businesses and visitors' comments were nearly all positive, and it gave a real lift to the town. My thanks to all those involved. You made Christmas in Burford special.

The civic service at St John the Baptist Church was well attended with the Lord Lieutenant, the High Sheriff of Oxfordshire, the Chair of Oxfordshire County Council, and the Chair of West Oxfordshire District Council who all accepted our invitation.

As the Lord Lieutenant, who represents the King, attended, we formally processed with the town mace leading, in and out of the service as protocol determined. Refreshments were served in the Warwick Hall afterwards and the town mace was on display. It was an opportunity to celebrate the part played by the many civic organisations in the town that contribute to our community, and the connections we have with other civic organisations in the county. My thanks to Christina, our Town Clerk, for organising the whole event.

The consultation of the change of length of coaches allowed into Priory Lane, and the zebra crossing proposed on The Hill, closed on 3 January. However, the council are working with OCC to look at the possibility of two pick up and drop off coach spaces on Sheep Street, with a 20 minute maximum time limit. This is in the early stages, but council have agreed to take this forward, as we are aware that whilst we should work to ensure the safety of residents and children at the primary school in Priory Lane, we also need to do our best to support the businesses in the town that rely on the tourist trade.

In addition, we are working with OCC to try to get a good number of EV charging points in the town for both residents and visitors to use. It is going far too slowly, but we will keep pushing OCC.

No further progress has been made with our request, supported by Fulbrook Parish Council, for a proper pedestrian path over Burford Bridge. Whilst proposals have been put forward by OCC's contractor, no further progress from OCC has been made. Our county and district councillors are working with us to try to move this on.

Finally, the King's Pageant Master has advised that 8 May will be "VE Day 80, a moment of celebration" for the 80th Anniversary of VE day and has asked communities to join the



Peter Higgs - Mayor
peter.higgs@burford-tc.gov.uk 07836 238306

celebration. Council will raise the special flag on the day. Any organisation or any resident who would like to take part in the celebration can see the Pageant Master's information here. <https://www.veday80.org.uk>
If you wish to organise a VE 80 celebration event, please could you let Christina, our Town Clerk, know at town.clerk@burford-tc.gov.uk



Your memories are invited

Enthused by the runaway success of the Tolsey Press's first publication, *Treasures of the Burford Tolsey Museum* (a new supply is available from www.burfordtolsey.org/shop) we have started work on our next project which, hopefully, is to publish the memories of some of Burford and districts' past and present-day residents, illustrating those aspects of the town's previous ways of life that these days have all but disappeared.

Whilst we are fortunate in being able to access Burford Tolsey Archive's small, but beautifully formed, treasure trove of written memories, we would like to expand its community collection of recollections, which in turn could enable us to include a broader selection in the proposed new book.

Can you help us by sharing your memories of yesteryear? Examples of these could range from any memories of your childhood, or school life, civic life, family life, social activities, working life, the wartime years, commercial life, church life, village life, recollections of the town's tourism and past visitors, working in service, to memories of town celebrations?

If you would like to support us by adding your personal, unique contribution to the town's recorded heritage it would be most helpful if you could jot down your recollections, in whatever form is the most convenient to you, and send them to me (contact details shown below), or David Cohen (cohen4sp@btinternet.com 07899 837482). Alternatively, if you would prefer to share your memories in a face to face chat, just let us know as this can also be arranged.



Burford crew of the National Fire Service with their Coventry Climax trailer pump

2025 AGM

The 2025 AGM was held on 15 January. If you would like copies of any of the papers please contact me.

2025 Museum Opening Days

Every year the museum closes from January to March to provide a welcome break to its volunteer room stewards and allow us to tackle some key curatorial tasks. We will be reopening seven days a week on 1 April 2025.

Peter Martin 01993 822769 petermartin@btinternet.com

THE BRIDGE INTERVIEW WITH CHARLIE MAYNARD MP

The Victorian novelist Anthony Trollope, a seasoned observer of politics, wrote that “When a man lays himself out to be a member of Parliament, he plays the highest game and for the highest stakes which the country affords.” In July last year Charlie Maynard played that game and achieved a striking win, turning a Conservative majority of 15,177 into a Liberal Democrat one of 4,339, albeit in a seat with much-changed boundaries.

When we met Charlie Maynard just before Christmas, he had had a particularly busy six months or so learning about the many facets of his new role while simultaneously recruiting his team. He points out that it takes time to find staff (typically between three and five) to help with research, legislation, constituency business and general administration. But the emails and demands on time that go with the job start on day one. That may sound like a recipe for exhaustion but we found him bubbling with enthusiasm and new ideas.

First, a bit of background. Charlie was born in Southampton and brought up there and in north Hampshire. His family has a strong tradition of service in the armed forces. Several have won medals, including a Victoria Cross, for bravery, but Charlie did not feel any pressure to follow that career. His education was interrupted by breaking his neck in a diving accident leading to six months in hospital. He studied geography at Christ Church, Oxford, and at the age of 25 he started his own business, BDA Partners, which advised on buying companies in Asia and latterly on selling them. He built this up until it had nine offices, seven of them in Asia.

By this time he had made his home near Witney. His wife, Sophie, runs the fivebooks.com website on which a wide range of experts recommend the best reading matter on their particular areas of expertise. They have three children aged 18, 17 and 16. He says he had not planned to enter public life but was propelled to do so by Brexit, which he had opposed. He accepted the democratic decision to leave the EU but wished to do something to mitigate the adverse effects of it. Rather than stepping straight into party politics, he began by chairing the Witney-Oxford Transport Group (more on this below). In 2022 he was elected as a Liberal Democrat district councillor for the Standlake, Aston and Stanton Harcourt ward. Then came the opportunity to be selected as Lib Dem candidate for the election which was expected in 2024. There were four others on the shortlist, but Charlie was the only local one. He tried to see every Lib Dem party member in the constituency and was selected with 80 percent of their votes. The general election followed.

He had never set foot inside the Houses of Parliament before he was elected as a member. He finds some of the procedures archaic and the work is very hard. His working day often runs from 6am to 10pm, though not all of it while sitting in front of a computer, but says his career in mergers and acquisitions inured him to long hours.

He has been busy since taking his seat, asking a number of questions in the House of Commons, including one of the prime minister about post-Brexit rules, and speaking on the Water (Special Measures) Bill. He initiated a debate in Westminster Hall (a secondary chamber with no legislative powers but where issues can be raised) about rail connectivity. He is a member of the cross-party Business

and Trade Committee and is on the standing committee tasked with scrutinising the Water Bill.

In his maiden speech, which can be viewed on X/Twitter @cammaynard, he listed a number of issues which are of particular concern to him. You might think that there is little that a backbench MP from a minority party can do when faced by a huge government majority. However there are things that he can campaign for outside of parliament by bringing together different interest groups. One of his concerns is transport. He points out that the government is now telling West Oxfordshire that it must build the best part of 1,000 new homes every year and that these will be scattered around the district but with no improvements to the transport infrastructure. As a result the A40 is regularly jammed (don't we know it?). The Eynsham park and ride, even when it opens, will only take a few hundred cars off the road. His solution would be to reopen the defunct Carterton-Witney-Eynsham-Oxford railway. He recognises that this will never be paid for out of government funds so he is developing other plans to meet the cost.

Allied to this is the question of healthcare. Secondary healthcare is concentrated on the far side of Oxford and is difficult to get to because of the aforementioned traffic problems. He would like to see the area around Welch Way in Witney, where there are various public service buildings, redeveloped so that the Community Hospital could be rebuilt and expanded to provide outpatient services and non-acute care within our area. At the same time Abingdon and Witney College could be expanded to make more further education opportunities available in our locality.

Another subject on which he is campaigning is to stop Thames Water from pumping sewage into our rivers. On this he has joined forces with Windrush Against Sewage Pollution (WASP) who have been fighting this battle for years.

A major event during Charlie's first months in Parliament was the debate on the Terminally Ill Adults (End of Life) Bill, otherwise known as the Assisted Dying bill. Knowing the strong feelings either way which exist on this subject, he called a public meeting with a panel of experts who encompass a wide range of views. In fact there was so much interest that the Corn Exchange in Witney was packed out and quite a few people (including the editors) could not get in. After considering all the opinions expressed, he decided to vote for the bill on the grounds that it should be developed further through the legislative process. He will decide whether he will ultimately vote for it to become law with particular reference to whether he feels the safeguarding measures are adequate. He said the debate itself was very impressive, with both sides listening respectfully to their opponents' arguments; Parliament at its best, far removed from the yah-booming of PMQs.



Editors

Charlie Maynard holds a weekly online surgery for constituents and you can book a slot at one of these by emailing charlie.maynard.mp@parliament.uk



BURFORD and DISTRICT SOCIETY



Our chairman, Stephen Cooper writes:

For those who are long-established residents, but not yet members, I would say that the Society enables us to expand our knowledge and appreciation of a wide range of topics and to make new friends, as well enabling us to play a part in shaping the town's future.

The committee have arranged a varied programme of events for this year. The talks are held at 7pm at the Warwick Hall, Burford.

The annual subscription is just £10 which allows you to attend all evening talks and the tea party without further payment. There is a small payment to cover the cost of our annual lunch. There are three ways to become a member:

- Join online, (there is a small 35p card fee applicable).
- Join by completing and submitting an application form.
- Just come to our next meeting and join there — you will be very welcome.

Non-members are also welcome to our talks at an admission charge of £5.

Our Programme for the Year

18 February

AGM followed by talk.

Rhinos on the lawn, how we got there and where we hope we are going!

Talk by Reggie Heyworth, managing director of the Cotswold Wildlife Park and Garden

15 April

Burford and its Buildings Revisited: Past and Future Work of the Victoria County History.

Talk by Dr. Simon Townley, county editor of the Oxfordshire Victoria County History based on the VCH sponsored book *Burford; Buildings and People in a Cotswold Town* (Phillimore 2008).

21 May

Visit to Chastleton House 12.00 – 1400*

The 17th century house is open exclusively for members of the Society on this day. One of the tours will be led by our chairman, Stephen Cooper who is a Chastleton House official guide.

17 June 1500-1700

Annual Tea Party

Greyhounds, Sheep Street, Burford by kind permission of Michael Taubenheim who has once again invited us to enjoy his wonderful garden.

Another talk is being arranged for June.

23 September

Our Life in the Music World

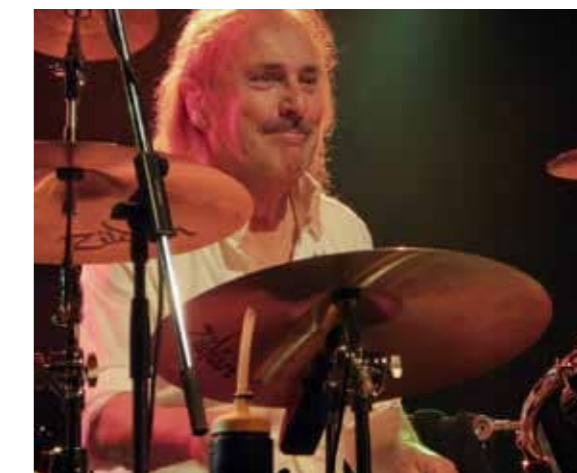
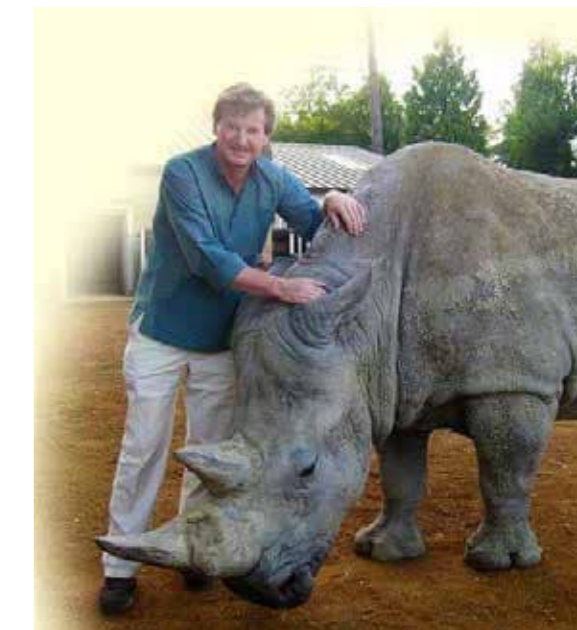
Status Quo drummer John Coghlan and Gilly Coghlan interviewed by Nick John, editor of Blues in Britain magazine.

14 October

Annual Lunch*

Followed by Quiz - What do you know about Burford?
Bert Clough, Hon. Secretary - b.clough947@gmail.com

* charge applies to cover entrance fee.



WHY WE SHOULD SUPPORT OUR FARMERS

Farms are handed down generation to generation and are the life blood of our food chain and the rural way of life. Farming in West Oxfordshire is not only a vital part of our community but plays an important part in our rural economy.

British food and farming provide the raw ingredients for the UK's largest manufacturing sector, Food and Drink, worth £148 billion to the UK economy, and jobs for more than four million people. This is 14% of the nation's workforce.

British farmers produce affordable, quality food to world-leading animal welfare and environmental standards, all while protecting and enhancing our precious countryside.

British farming is also uniquely positioned to tackle climate change by capturing carbon in soils through planting crops, managing grassland and planting trees and hedges which is a vital part of maintaining our countryside.

Farming tends to be a family business and the PM, from an urban community such as Islington, doesn't seem to understand this simple fact. The government clearly has no understanding of farming. Farming is not a commercial enterprise to be run remotely or by Private Equity or large corporations.

In my Division, there are a number of family farms: the Walker family own several farms in the Swinbrook and Asthall area. In my village, Richard Murray and his two sons run the local farm – these are integral family businesses.

Cotswold farms and the farmhouses are valued significantly over Labour's £3m inheritance tax (IHT) threshold. Farmers tend to be asset rich but cash poor. Many of these farmers are single or widowed and would not fall within the lower £1m threshold - giving them and their families an unfair tax burden.

The government's proposed IHT increase would wipe out most of the farm's annual income. It is both unfair and unjust and most importantly will destroy our valuable farming industry. Thousands of family-run farms will be affected and will be forced to sell their farms if they cannot afford to pay the IHT.

My father was a dairy farmer and I grew up within a farming environment. My father was up at 4am to gather the cows for milking – it was an arduous task. In the early 1960s, his herd was hit twice by foot and mouth which forces you to destroy your herd and start all over. Building a new herd takes time and on the second coming of the disease he decided to sell the farm. Farming is a hard-working choice.

Clearly those in the Labour party who have an urban background have little understanding of the commitment needed, but I ask you all to write to your MP and to urge the government to change direction on this policy as it will inflict severe damage on our farming industry which is so vital to our food chain and threatens our rural way of life.

OCC Cllr Nicholas Field-Johnson, Burford & Carterton North nick.fieldjohnson@oxfordshire.gov.uk and nfjuk3@gmail.com



A FULBROOK LANDMARK CELEBRATED IN MUSIC

Gustav Holst, the composer of *The Planets*, was born in Cheltenham and even wrote a *Cotswold Symphony*. Nearer to home, his daughter Imogen – composer, conductor, musicologist, editor and educator – wrote a short orchestral piece in the mid-1930s called *On Westhall Hill* and this has recently been recorded for the first time by the BBC



Imogen Holst (1907-1984)

Concert Orchestra. The recording was played on Radio 3 and the presenter, Georgia Mann, referred to the eponymous hill with its beautiful view over Burford and talked about the origins of the piece.

It seems that Imogen Holst regularly visited her good friends Captain and Mrs Kettlewell who lived in Burford (where Barclays Bank used to be) before moving to Dolphin House which they built on Fulbrook's Westhall Hill. In the largest room in the house they built a stage area, which is still there, on which they produced entertainments and above one of the



windows is a series of small plaques, one of which pictures a kettle hanging over a well – proof positive that the Kettlewells built the house.

Mrs Kettlewell was the first conductor of the Burford Orchestra and maybe it was for that august body of instrumentalists that Imogen Holst wrote her music. It's a

charming five-minute sub-Vaughan Williams sort of piece, based on two imaginary folk melodies, redolent of what is affectionately referred to in musical circles as the 'cowpat school' of English composition! The Kettlewells were much involved in the English Folk Dance and Song Society and this and the Fulbrook connection clearly inspired the composer to write as she did.

I was lucky enough to meet Imogen Holst back in 1963 when she came to open the new Cambridge Music Shop. She said there was only one way to start things off, and got us all singing! How lovely to think that she will have walked up and down Fulbrook's very own Westhall Hill on a number of occasions and then celebrated it in music.

Brian Kay

The recording is part of an album called Imogen Holst: Discovering Imogen and was issued on the NMC label as NMCD280. It is available as a CD or a download - Ed

POPPY APPEAL

We would like to pass our deepest thanks for those who supported the 2024 Poppy Appeal. With your kind generosity we raised £5,774.48. Thanks again for your support and kind donations.

Poppy Appeal Organisers, Paul and Sally Andrew

IN SEASON - FEBRUARY

Hello and welcome to my column, In Season. My name is Holly and I'm a clinical nutritionist with a passion for teaching people how to eat well for life. I'm all about long-term habits that make you feel good and reach your health goals. I hope to have regular articles exploring what fruits and vegetables are in season, their traditional uses, current research on their health benefits, and inviting you to cook up a storm in the kitchen with each ingredient.

This month, it's all about the cruciferous vegetables. These are the ones your kids won't eat - Brussel sprouts, cauliflower, cabbage, kale, purple sprouting broccoli. The word cruciferous refers to their flowers, which all have four petals that form a cross shape. In the world of botany, the cruciferous plant family contains over 4,000 species, only a few of which are actually edible.

I will admit, cruciferous vegetables are my jam! I love them and I think that almost everyone could benefit from eating more of them. Let's talk about broccoli. Broccoli contains a phytochemical (that's a chemical coming from plants) called sulforaphane, produced as part of its defence mechanism. Imagine a slug coming and biting a chunk out of the broccoli; the broccoli doesn't like that and lets out some sulforaphane that tells the slug to stop eating it thank you very much. The same thing happens when we chop broccoli or chew it; we're breaking down the cell walls and gaining access to the sulforaphane, which is incredibly good for us as humans.

So, what's so great about sulforaphane? Well, now that it's not being used to fend off slugs, it's free to wander around our body and fight off cancer. I'm not joking. Sulforaphane is a powerful antioxidant and has been found to fight carcinogens. Additionally, sulforaphane is also great at lowering levels of inflammation, so for all of you with high blood pressure, broccoli might well be the answer.

But there's more! Broccoli sprouts (i.e. the ones you can grow on your windowsill) contain just as much sulforaphane as a fully grown head of broc. So, if you want to up your sulforaphane intake (and trust me, you do) then you can grow some broccoli sprouts on your windowsill and in a week or two you'll be able to add them to your salads, soups, sandwiches or even use them as a fancy garnish on your dishes at dinner parties to get you one step closer to that Michelin star.



Cruciferous vegetables might not have had a starring role in your culinary history, but why not give them a go tonight. Try steaming a handful of broccoli florets and smothering them in a mustard vinaigrette as a warming side dish.

I'd love to hear what you think of this article, and if you would like one to one support on your health journey then please reach out via my email or website below.

Holly@heliconiahealth.com Heliconiahealth.com

COPYRIGHT © 2025 Copyright in all articles in this magazine is reserved by the respective authors of those articles as identified. Requests for permission to copy or reproduce articles should be submitted in writing to:

The Bridge c/o Burford Post Office 29 Lower High Street Burford OX18 4RN or by email to editor@thebridgeburford.co.uk.

SNOWDROP SUNDAY



Matthew Freud and Sheherazade Goldsmith are delighted to welcome visitors to Burford Priory for the annual Snowdrop Sunday Charity Day. This year it is taking place on 16 February from 10-3.

All entrance fees (£4 for adult, children free) will be split between Katharine House Hospice and BEAgles (the Burford Environmental Action Group).

Tickets can be bought in **cash** from Madhatter Books in Burford or on the day at the entrance in Priory Lane.

GUIDED WALKS WITH THE COTSWOLD VOLUNTARY WARDENS

Details of the walks available are described on the website (below). Please check walk details carefully on the website, including whether booking is necessary. Additional walks may be published on the website.

<https://www.cotswolds-nl.org.uk>

A Snowdrop Walk

Friday 31 January Easy: 2 miles 1.5 hours

Start: 11.00am The Fox, Great Barrington OX18 4TB
A circular walk never far from a display of snowdrops.

Wild Wintry Wolds – Tuesday 11 February – Moderate 3hr 5ml

A return to explore the fields and woods above Stanton, searching for wintering birds. The route will depend on what we find but is approximately 4 - 6 miles in length. There are some steep slopes and paths will be muddy so wear appropriate footwear. Please bring a snack and a drink. Binoculars are essential!

Start: 10.00am Stanton village car park, WR12 7NE OS Map ref: SP 067 344. W3W: eternally.master.corporate

A Two Café Walk

Wednesday 12 February Easy: 3.5 miles 2 hours

Start: 10.30am Rise and Flour, Groves Yard, Milton under Wychwood OX7 6JW

A circular walk starting and ending at a café with a café stop halfway round the loop.

Blenheim for Free

Thursday 27 February Easy: 5.5 miles 3.5 hours

Start: 10.00am Combe Gate, East End, Combe OX29 8ND
A circular route on Public Rights of Way around the World Heritage Site

PLEASE use appropriate footwear as some walks may be steep and muddy in places. EASY - Length may vary but terrain is mainly flat (level); MODERATE - includes some hills and rough ground. STRENUOUS - may be rough underfoot and ascents and descents may be steep. We welcome guide and hearing dogs - sorry, others not allowed. Walks are free although we do invite donations to help fund our conservation and improvement work.

Sheila Wasley

ASTHALL MANOR EVENTS

16 February: Winter Open Day (snowdrops, crocuses, and more)

20 - 22 June: *In the Footsteps of the Mitfords* returns to Asthall Manor. This perambulatory performance by Scary Little Girls takes you all around the grounds of Asthall Manor as you get to know the sisters through their writings. Last performed in 2020, to rave reviews: see scarylittlegirls.co.uk



2 July: The HandleBards (handlebards.com) will be performing Shakespeare's *Much Ado about Nothing*. This is Shakespeare with a difference; the HandleBards pedal from venue to venue with all of their set, props and costumes on the back of their bikes. Keep an eye on our website (asthallmanor.com) for more details, including booking. Or you can sign up to our mailing list for updates.
Penny Frankland-Smith



CALLING LOCAL HISTORY BUFFS

Rissingtons Local History Society - Friday 21 February at 2.30pm. "Cleeve Hill - The Cotswold Health Resort" The story of the development of an affluent suburb of Cheltenham 30 years before the First World War. A talk by David Aldred who has written a book on the subject.

Venue: Village Hall, Upper Rissington GL54 2QW. Visitors welcome: £3.50 to include refreshments. Enquiries informationRLHS@gmail.com or 07815 606770.

Susan Brown

BURFORD & KINGHAM ROTARY

Welcome to our first newsletter of 2025. Although the official New Year has already started, the Rotary year is only half way through. Our next new year starts on 1 July. That is when the next president and other officers of the club start their year in office. Since our last newsletter, we have changed our meeting venue. Our regular weekly meetings will be held in the Greening Room at the Warwick Hall, which is next to the church in Burford. The hall also has larger rooms which we can use for bigger events.

Since our last newsletter we have been planning some events for the next few months. For example:

On 28 February the Warwick Hall will be the venue for a Murder Mystery Night - a dinner with intrigue! Please contact our secretary (jpw.smith@jasss.co.uk) for more information. In the next few weeks, we are planning to visit Sandhurst Military Academy, Chipping Norton Museum and Hook Norton Brewery. We are also in the early stages of planning a charity duck race. Several years ago, we held these races on the stream at the Mill House Hotel in Kingham, which is still closed. A Rotary Club in Somerset has created a mobile water course structure for plastic ducks - watch this space for more details.

On Sunday 5 January, we met for a post-Christmas holiday lunch hosted by one of our members. The idea is, having probably eaten too much over the holiday period, to enjoy a minimalist lunch for £20 each, thus raising some funds for our charity account. In recent years, for example, we have donated money, goods and volunteer time to the Chippy Food Bank.

We are always keen to welcome enquires from anyone who might be interested in joining our club. We meet on Monday evenings at 6:30 for 7:00pm.

If you would like to help at one of our fundraising events, or you are thinking about joining Rotary, then our secretary would love to hear from you: jpw.smith@jasss.co.uk.

Website: www.burfordkinghamrotary.club. FB: burfordkinghamrotary.

Stuart Jackson

DECEMBER COTSWOLD QUIZ

Well done to all of you who came up with the answers, or most of the answers, to our quiz. The first person to email us with all the correct answers was Ms Jane Lofter and we have donated £100 to her nominated charity, Katharine House Hospice, which provides free specialist care for adults with incurable illnesses in north Oxfordshire.

Thank you Joe Brannan for giving us some entertainment and head-scratching in the last issue. The answers can be found on our website.

Editors

THE HIDDEN LANDSCAPE OF THE COTSWOLDS - CONCLUSION

In the first article of this series I left off with the puzzle of why our placid rivers and streams have left such an impact on the landscape. To answer that question we need to go back many millennia to a time before our ancestors settled the Cotswolds, or indeed the British Isles.

Today the Cotswolds has a temperate climate and many people worry that climate change will drive it to extremes of warmth. But over the last million years or so humans could not gain a foothold in Britain because it was too cold. Ice sheets, which are currently restricted to Greenland and Antarctica, periodically covered much of the British Isles. Glacial rock deposits are spread around the Cotswolds indicating that ice-margin reached our doorstep.

The ice that had covered much of Britain had largely melted by about 10,000 years ago, revealing the barren landscape that the glaciers had carved. As the ice melted, vast quantities of freezing water were supplied to the rivers and streams beyond the ice-front. Our familiar Cotswold rivers were supercharged by this melting ice and carved deep valleys on their way to join the Thames. As the supply of ice melt declined our rivers became dependent solely on rainwater and their power rapidly diminished.

So the answer to our puzzle is that the landscape was shaped long ago by the vigorous, youthful forebears of our present-day rivers. Today the Windrush and Evenlode meander through valleys carved in more turbulent times. To misquote D.H. Lawrence, we look at them through the wrong end of the long telescope of time, luckily for us.



There is another important difference between those early post-glacial times and the present-day: the ground was still frozen then, even though the ice had gone - like northern Canada or Siberia today. The Cotswolds, as we have seen, are built largely of limestone rocks. When the ground is not frozen these rocks are permeable; that is they allow water to drain through them, often creating caverns and caves. But during times of permafrost the water must flow at the surface. So numerous short, probably intermittent, streams funnelled water into the larger rivers such as the Windrush and the Leach.

These ephemeral streams are gone now but they have left their mark on the landscape in the form of 'dry valleys'. There are many dry valleys in the Cotswolds and at least one is likely to be familiar to readers of *The Bridge*. Most of us have at one time walked the riverside path between Burford and Swinbrook. Just east of Widford there is a tree-lined depression in the hillside to the north called Dean Bottom. There is no surface stream through Dean Bottom today but the valley clearly marks where it used to flow - and the waterlogged ground near the stile shows that some still flows, at least periodically, underground.

Our familiar landscape, then, is the erosional legacy of a past age; one that was, in human terms, distant and climatically brutal. It is somewhat ironic that our present idyllic environment should be the result of such an inhospitable past.

If you would like to know more about the Cotswolds landscape a good place to start is Pete Jeans' recent book - *Landscape and Landforms of the North Cotswolds*, published by the Gloucestershire Naturalists Society.

Joe Brannan

Lecture on Wednesday 12 February

Velasquez and Goya: Traditionalists or Modern Masters?

This lecture charts Velasquez's approach to still life paintings while still in his native Seville ("... he is the best..." Francisco Pacheco) to his meteoric rise to prominence in the Madrid court of Philip IV, where he broke new ground in the modern treatment of official royal portraits and sympathetic renditions of the horrors of war.



Almost 200 years later Goya began as a jobbing painter in the provinces before moving to the Bourbon court where he worked for powerful court officials as well as the royal family. He was fearless in his approach, presenting unflinching images of war. He tackled the nude at a time when it was frowned upon by the Inquisition and experienced first-hand their persuasive methods of interrogation.

Alice Foster has lectured for Oxford University Department of Continuing Education since 1998. She lectures regularly at the Ashmolean Museum, Oxford, and at the Oxfordshire Museum in Woodstock. Her busy freelance career includes organising History of Art study days with colleagues, and regular weekly classes in Oxfordshire and Worcestershire. Currently, Alice is a residential tutor at the Argyll Hotel on the Isle of Iona, specialising in Scottish art. In 2010 she was elected president of Banbury Fine Arts Society.

This hybrid lecture will be held at the Warwick Hall, Church Green, Burford, OX18 4RZ at 11am and via Zoom. Please be seated by 10.50 for notices of upcoming events. Numbers are no longer restricted, but booking is recommended to reserve a place via our website (see below) Non-members are welcome (space permitting) at a charge of £10.

Further information will be circulated via the newsletter and bookings can be made via the website (see below) or please call Lisa Etheridge on 01285 711805 for a booking form.

Special Interest Day on Wednesday 26 February
Adventures in Textiles: A Journey Through Central Asia

The special interest day comprises three lectures, each exploring a textile and a road. We examine how textiles have changed the course of Central Asian history, politics and a way of life. We also revel in the intoxicating designs, colours, and techniques achieved with these three textiles, from breathtakingly intricate suzani embroidery and robes fit for a Shah, to world-class carpets, cheerful shyrdyk felts and diaphanous cotton, lighter than a spider's web. Each lecture will also be embroidered with Chris Aslan's own experience of living and working in the region for 15 years as he attempts to justify a rather bold assertion that everything is about textiles.

- Lecture 1: The Wool Road
- Lecture 2: The Silk Road
- Lecture 3: The Cotton Road

Chris Aslan was born in Turkey and spent his childhood there. After school, Chris spent two years at sea before studying media and journalism at Leicester University. He then moved to Khiva, a desert oasis in Uzbekistan, establishing a UNESCO workshop reviving fifteenth century carpet designs and embroideries. He was kicked out as part of an anti-Western purge and took a year in Cambridge to write *A Carpet Ride to Khiva*. Chris then spent several years in the Pamirs mountains of Tajikistan, training yak herders to comb their yaks for their cashmere-like down. Next came a couple more years in Kyrgyzstan living in the world's largest natural walnut forest and establishing a wood-carving workshop. Since then, Chris has studied and rowed at Oxford, and is now based in Cambridge. When he's not lecturing for The Arts Society, he writes. His latest book, *Unravelling the Silk Road*, is published by Icon Books. Chris also takes tours to Central Asia, returning whenever he can, having left a large chunk of his heart out there.

The Special Interest Day consists of three sessions, two in the morning, followed by lunch and then another session in the afternoon. It is a smaller event and an opportunity to get to know other attendees over lunch. This day will be held at the Warwick Hall, Church Green, Burford, OX18 4RZ at 10.45am, finishing at 3.00pm. Doors open at 10.15am, with coffee being served. Numbers are restricted so booking is essential to reserve a place via or please contact vicechair@theartsocietycotswolds.org.uk or call Alison Morgans on 07771 817050 for a booking form. Charge £45 for members. Non-members are welcome (space permitting) at a charge of £47.

To learn more about The Arts Society Cotswolds and to see what lectures, Special Interest Days and other activities are planned, please go to the website: www.theartsocietycotswolds.org.uk Or contact Alison Morgans on 07771 817050 [Alison Morgans](mailto:Alison.Morgans@theartsocietycotswolds.org.uk)



WHAT'S ON AT FARMED SPRING 2025

FarmED, Honeydale Farm, Station Rd,

Chipping Norton OX7 6BJ, UK

Info and Booking: www.farm-ed.co.uk

From Film Nights to Lunchtime Talks and Friday Farm Walks, there's plenty to get excited about in 2025.

Friday Farm Walks

Most Fridays - 10:30 - 14:30
Explore Honeydale Farm on an inspiring and informative guided farm walk, led by founder, Ian Wilkinson or a member of the FarmED team. Approximately two hours.

Pastured Pigs

Friday 31 January - 9:00 - 14:00
Learn how you could incorporate a pastured pig enterprise into your farming business, and hear from the farmers already doing so.

Lunchtime Talk: Exploring Organic Farming Globally

Tuesday 4 February - 11:45 - 14:00
Sophie Gregory's journey uncovers organic farming's challenges and opportunities in a rapidly changing global market.

Honey Tasting Evening

Wednesday 5 February - 17:15-19:00
Become a honey sommelier for the evening! Join us for a tasting session of honeys from all over the world and discover the reasons why each jar of honey tastes unique.

Introduction to Regenerative Agriculture

Thursday 06 February - 9:45 - 16:30
Why do we need a new system of farming? Everyone is talking about 'Regen Ag' but what does it actually mean? How can you prove you're farming regeneratively?

How to Set Up a CSA - Two day course

Tuesday 11 February - 9.45 - 12 Feb, 17.00
Learn why Community Supported Agriculture (CSA) is fast becoming a resilient and transparent business model on this two-day course. See CSA gardens in action, hear from people running different systems and get all the tools you need to set up yourself.

Film Night: The Nettle Dress

Thursday 13 February - 18.00 - 20.30
FarmED Film Nights presents *The Nettle Dress*. Follow one man's journey into creating a dress from foraged nettles in memory of his late wife.

Introduction to Agriculture

Tuesday 18 February - 9:45 - 16:30
For people with little or no agricultural experience who are either entering a career in the rural sector or would like a basic knowledge of farming and food production.

Lunchtime Talk: The FarmED Story

Wednesday 19 February - 11.45 - 14.00
Are you a regular visitor to the cafe, but don't quite know what happens at FarmED? Join our founder Ian Wilkinson for lunch, as he talks about what we do here, why we are busier than ever, and what you can do to get involved!

Lunchtime Talk: Farming Through the Ages

Tuesday 4 March - 11.45 - 14.00
How has the British countryside changed over the centuries

and what can we learn from our ancestors to improve how we're managing it today?

Goats for Beginners

Thursday 6 March - 9:45 - 14:00
Have you always wanted to keep a few goats but wonder where to start and how much work is involved? Or would you just like to enjoy the experience of finding out more about these appealing animals?

Herbal Ley Establishment & Management

Tuesday 11 March - 9:45 - 16:30
Discover the benefits of introducing herbal leys into your rotation with this one-day course, and leave feeling confident in your abilities to plan and manage your own system.

Lunchtime Talk: Will Weeds Always Win?

Thursday 13 March - 11:45 - 14:00
Can discovering which genetic pathways keep weeds strong reveal strategies to enhance crop resilience and advance sustainable farming?

Lunchtime Talk: Circular Waste Systems

Wednesday 19 March - 11.45 - 14.00
Recover, rotate, regenerate: discover circular solutions for organic waste with Sylvie from Tumblebug.

Lunchtime Talk: A New Approach to Farm Ownership

Wednesday 26 March - 11:45 - 14:00
Community ownership as a way of securing biodiversity within the context of a productive farm - and presenting a possible solution to the succession question.

Beekeeping for Beginners

Wednesday 2 Apr - 9:45 - 16:00
Are you interested in becoming a beekeeper? Do you want to discover the fascinating world of pollinating insects?

Spring Foraging Farm Walk

Mon 7 April - 9:45 - 12:30
Would you like to uncover the edible and ecological secrets hiding in the hedgerows, trees and fields around you? Join us for a foraging walk, connect with nature and nibble on our abundant wild larder.

Dawn Chorus

Tuesday 6 May - 4:00am - 7:00am
Celebrate the Dawn Chorus with a torchlit farm walk, led by conservationist Nick Patel, followed by hot drinks and a light breakfast. This event has sold out for the past three years so book your ticket soon to avoid disappointment.
[Fiona Mountain](mailto:Fiona.Mountain@burfordanddistrictsociety.org.uk)



BURFORD and DISTRICT SOCIETY

NEW TO BURFORD & AREA?

Welcome. The Burford & District Society will be happy to deliver your free copy of the 'Living in Burford & District' Pack with details of many of the local facilities, clubs and societies. Simply email your name and address to lizannjack@gmail.com

Hidden Treasures in Parish Churches

From Botanical Embroidery to Medieval Fashion
Talk by the historian Challe Hudson

6.30pm
Friday 21st March, 2025
St James the Great, Fulbrook

Register for your free ticket and glass of wine at
TreasuresinParishChurches.eventbrite.com

Contact: friendsofstjamesfulbrook@gmail.com



All readers of The Bridge are welcome at St James the Great, Fulbrook on 21 March to hear what promises to be a fascinating presentation about some of the treasures to be found in all our parish churches. The speaker, Challe Hudson, is an expert in late medieval and early modern English fashion, and will reveal insights to increase our appreciation of various of the carvings and memorials found in our local churches. Please join us for the talk followed by a reception. Book the date in your diary and sign up now!

Deborah Knight

BURFORD OIL SYNDICATE



(Covering
Burford,
Fulbrook,
Taynton and
Bradwell
Village Only)

Next order date is Thursday 6 February 2025 by 5.00pm. Late orders will not be accepted. Deliveries for the February order are expected to be between 10 and 28 February, depending on weather and market conditions at the time. The following order will be on Thursday 13 March 2025.

You can join the syndicate and order online at www.burfordoil.co.uk, or membership application forms, and order forms are available from Reavley's Chemist. Any questions please contact

Peter Higgs - 822462

A SALE BY WAY OF AUCTION IN 1878

We found a document in the Moody Collection in the Burford Archive, no 2023.0579, which is a draft of particulars of sale prepared for an auction of a landed estate in Shilton in June 1878.

OXFORDSHIRE - LANDED ESTATE with excellent Farm residence and the Manor of Shilton 3 1/2 miles from Bampton & Alvecot Stations 16 miles from Oxford 6 from Witney & Farringdon. Comprising the Manor Farm of 386 a[cres] 0 r[oods] 5 perches (more or less) of excellent meadow pasture & arable land in high cultivation with good roads & approaches. Freehold with the exception of a small portion which is equal to Freehold being held for 900 years from 1616 at 3/4d per annum let on lease to a first-class tenant at the low rent of £511 - 11s & forming one of the best of safe investments. The commodious and desirable residence lies in a pleasant country adjoining the Estate of the Duke of Marlborough, Lord Redesdale and other large landed proprietors, well situate for market towns & 2 Railway Stations.

This opens a window on England in Victorian times. The property is said to be situated in 'a pleasant country' area, at a time when more than half the English people already lived in towns and cities; but they were no longer reliant on the horse and the coach for transport. The railways had arrived during the 1840s and had since proliferated all over the country, so that Shilton - which was not large - now had access to two railway stations.



Manor House, Shilton (British Listed Buildings)

The property for sale was no ordinary house, but a manor, comprising a farm, manor house and numerous other buildings; and the estate agents did not hesitate to describe it in terms which would now be considered both amusing and snobbish. They boast that the manor house is a superior residence and, specifically, a large house with stables and cottages. The buyer will clearly need a number of servants, some of whom will doubtless live in tied cottages.

The sale appears to have included the Manor of Shilton, rather than just the manor house. If this was the case, the buyer might also have become lord of the manor; and, contrary to what one might think, this was not just an honorific title. The lord of the manor still had certain rights in the 1870s, including the right to hold a manor court, and register the transfer of copyhold title to land. These rights were only abolished in 1922, by Act of Parliament.

In 1974 Shilton Manor Farm was described in Pevsner's Buildings of England as 'an Edwardian house of no distinction' but things have changed. The manor house is now a Grade II listed building, valued at over £4 million.

Stephen Cooper



LETTERS TO THE EDITORS

The Non-stopping Hospital Bus

As we all know, if you have an appointment at the JR it is almost impossible to get a car-parking space unless your appointment is around 7.30 am. So if you are like me, you take the H2 bus from Witney. However a note of caution. On two occasions the H2 did not call at either of the JR stops on its way to Oxford Brookes.

The first time this happened to me was last summer. The Oxford Brookes term had ended but when I asked the driver why he had missed out the hospital he replied that he had to get to Oxford Brookes. "Time" he said! There were no students to pick up! So three old ladies (including myself) ran down the hill to the JR (or what passes for running these days).

On the second occasion - five days before Christmas - we again missed out the hospital. This time I remained on the bus for the return to the JR. This particular driver had stopped at The Evenlode pub for a delay, even after having picked up a passenger. He then stopped again at Oxford Brookes for five minutes. When I asked him why he had missed out the hospital he replied "A matter of time". This was complete rubbish. I was stressed and angry and was late for my appointment, a post-surgery follow-up.

Be careful when you use the H2.

Angela Tancock

We thought the H in H2 indicated that it was specifically a hospital bus. We have contacted the operators of the bus service for comment but at the time of going to press no reply had arrived- Ed

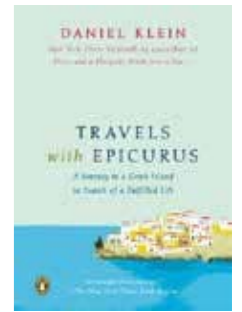
Dog Mess on Frethern Close

Sorry to talk about something so dirty, but there is so much dog muck on Frethern Close. Who or what do I blame, I don't know. I have suspicions. I suspect, with dark mornings and darkness early at night, people feel nobody sees their dog leaving a mess, so they just leave it. When a spate of it happens, I guess a new person has moved in, who allows it. One thing I do think is a problem. We used to have two dog poo bins on the estate. Since the one was removed at the top of Wysdom Way, far more people seem to have elected to just leave a pile of mess on the pavement, or verge, rather than pick it up and go back to the last bin, or take it home. I seem to remember reading a year ago or so about the new bins, and that it was hoped people would take the poo home to their own bins. It is not working. Would it be so bad to restore some of the bins please? As a responsible dog owner, I even note that my dog hates to be in the same area where another has fouled - I guess for fear of blame. I don't want to step in it, my dog won't want to step in it. The people letting it happen and leaving it there, I can't understand their mentality, they must care nothing for the community But for the sake of restoring one bin out of two, I am sure that is not a huge expense, and I am sure if even a small proportion of these people who can't be bothered to take their mess home would use a local bin, it would be worth it. P.S. The one still on Frethern Close is regularly full to overflowing, but so was the one at the top of Wysdom Way, so logically, with only half of the bins left, 50% is quite possible on our verges, pavements and roads.

Neil Treloar, Frethern Close, Dog Owner.

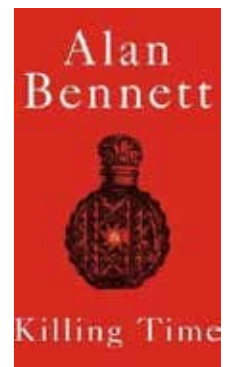
ALICE'S BOOK GROUP

Two books recently read by Alice's Book Group deal with old age. *Travels with Epicurus* by Daniel Klein produced a great deal of discussion in Alice's Book Group, not merely about the book. Having reached the age of 73, Klein wanted to find a formula by which he could have a satisfactory old age, so he travelled to the Greek island of Hydra where he believed the elderly had achieved a state of happy contentment. To help him to an understanding he carried with him a library of philosophical tomes through which he led us to the conclusion that for a happy old age one must enjoy the simple things in life and do what one wants. Quite simple, really. We did remark, however, that this solution could only be achieved if there was some solid financial security, and the book was relevant only for the reasonably well breched, who preferably lived in a warm climate.



Most of the group enjoyed this romp with ancient and modern philosophers, as we were led a circuitous journey, pleasantly described, with occasional humour; and bathed in Greek sunshine we met the cheerful local people, used as illustrations of the author's thesis.

The next book we read was, by contrast, very grey with only flashes of dark humour: *Killing Time* by Alan Bennett. The critics raved, but most of us thought that its major virtue was that it is very short. The first review I was given: "I was disappointed that a 'national treasure' can make money from a horrible little lampoon like this. It wasn't funny. It wasn't clever." This may not be a reflect the views of all the Book Group, but it is not a happy book, possibly not a bad thing as we must embrace all aspects of experience, however uncomfortable.



An observational study set in an old peoples' home, the most prominent character is a cantankerous old man, but there are briskly observed sketches of some of the less unpleasant residents, and a kindly helper, overseen by a harried worldly matron. Whilst Daniel Klein's book concentrates on early old age, this is concerned with old, old age with its ailments and disability. When Covid runs rampage, particularly through the elderly, Bennett ruthlessly kills off most of the characters with the same impartiality as the disease. Perhaps it is the depressing nature of the book, but few were able to extract much of the humour described in the press. That may be that we are ourselves a "mature" group and sensitive to the topics raised, but it did spark much discussion on the inequality of old age, the reduction of interesting lives to a meaningless existence, loneliness, and, of course, the awful suffering the Covid isolation caused.

More observational writing next, but funny and fantastical: *Weird Sisters* by the late lamented Terry Pratchett
Veral Marshall

WE ARE ON X/TWITTER

To get the latest news follow us on X (the platform previously known as Twitter) @BridgeBurford or go to our website www.thebridgeburford.co.uk.



Cotswold Wildlife Park welcomes a tiny giant ahead of World Anteater Day.



A giant anteater baby has made his debut at Cotswold Wildlife Park. The pup, named Antony, is the third breeding success for parents Zorro and Zeta since their arrival at the Park in 2010. Cotswold Wildlife Park is one of only two zoological collections in the UK to have bred this species in the last 12 months. Visitors can see the anteaters in the large enclosure they share with crested screamers near the Children's Farmyard.

Anteaters are generally solitary animals, except during the mating season. After a gestation period of around 190 days, the female produces a single pup which weighs approximately 1.3kg. The female gives birth standing up and the young Anteater immediately climbs onto her back. The young are born with a full coat of hair and adult-like markings, aligning with their mother's camouflaging. Similar colouring helps the pup blend in so predators can't see it. A mother will carry the baby on her back for approximately six to nine months (until it is almost half her size). The young suckle for two to six months and become independent after roughly two years, or when the mother becomes pregnant again.



The giant anteater is considered to be one of the most threatened mammals of Central America and is feared extinct in Belize, El Salvador, Guatemala and Uruguay, according to the International Union for the Conservation of Nature (IUCN). Giant anteaters are listed as "Vulnerable" on the IUCN's Red List of Threatened Species. Habitat loss, roadkills, hunting and wildfires have substantially affected their population numbers over the last ten years. Scientists estimate that 5,000 individuals are left in the wild.

Giant anteaters (*Myrmecophaga tridactyla*) are the largest of the four anteater species and boast one of the most fascinating tongues in the animal kingdom. They are specialist predators of termites and ants and may consume tens of thousands of

these tiny nutritious insects every day. Anteaters are edentate animals—they have no teeth. Ant and termite nests are ripped open with their powerful claws and the tongue acts as animated flypaper. These tongues can protrude more than two feet (60 cm) to capture prey. Ants possess a painful sting when attacked so anteaters have to eat quickly. They do so by flicking their tongue up to 160 times per minute to avoid being stung. An anteater may spend only a minute feasting on each mound. They never destroy a nest, preferring to return and feed again in the future.

The new pup isn't the only new arrival in the anteater enclosure. They share their home with crested screamers (*Chauna torquata*)—a large bird species with one of the most impressive calls in the bird world. Recently the adults bred for the first time in the Park's history. Only two other zoological collections in the UK have achieved breeding success with this species in the last 12 months. Due to their vocal prowess, we have named our chicks after Taylor Swift as we are big fans of the singer here at the Park. The chicks, named Taylor, Alison, Swift and Red, are now all getting their own personalities and have started helping build the nests and trying to join in with the alarm calls! These four chicks will have increased the captive UK population by almost 20% so they are very important to the breeding programme.



Cotswold Wildlife Park is currently open from 10.00am every day*, with last admission at 3.00pm**— <https://www.cotswoldwildlifepark.co.uk/plan-your-visit/opening-times/>

@CotsWildTweets www.facebook.com/cotswoldwildlifepark

STOP PRESS We have just found out that Cotswold Wildlife Park and Gardens has been crowned the "Best Family Attraction in the Cotswolds" in the Cotswolds Awards 2024. The awards are 100% driven by public nominations and votes and we are absolutely thrilled with the news. Reggie Heyworth, Managing Director of Cotswold Wildlife Park, said: "What a brilliant way to end the year, receiving the accolade of 'Best in the Cotswolds' from all those who voted for us in The Cotswolds Awards. It's been really busy this year, with lots of wonderful births and record numbers of visitors. We have had great feedback about how people love being in nature, seeing the animals and enjoying the lovely gardens here and it really is a terrific boost to all of us to have all this confirmed with this award. Knowing that it is actually voted for by the public makes all the difference. It also makes this place so much fun to work in and to be a part of, so a huge thank-you from all the staff who work here to everyone who took the trouble to show their appreciation for us by voting for us."

Debbie Ryan



Many thanks to all of you who supported the Burford Festival last June by attending the Open Gardens and the wide range of talks, music and theatrical events. This enabled the Festival to achieve one of its key aims, being to bring the community together in what continues to be challenging times.

In addition to being hugely enjoyable, the Festival was also successful in raising significant funds to enable it to fulfil one of its objects. This is to provide financial support to local charities, groups and other organisations within Burford and its surrounds so that they can continue to play a vital part in benefiting the local community.

As a result, the Burford Festival trustees have agreed to support a number of local organisations by making grants to support the following projects:

- Burford Primary School - School Eco Council Pond Project
- Burford Town Council - Burford Christmas Lights
- Friends of Burford Library - Activities for younger generation and new books
- Fulbrook Parish Council – Playground safety measures, repainting and support
- Lenthall Concerts - Family Concert June 2025.

The trustees are extremely grateful to all the members of the Burford Festival Committee, led by Sara Hall, whose creativity, energy and dedication provided us with such a memorable festival in 2024. Many thanks are also due to the army of volunteers who assisted with the running of all the events.

As chairman of the trustees, I look forward to working with the new Festival Committee which is already planning for **Burford Festival 2026**. Please do get in touch with me at trustees@burfordfestival.org if you have any ideas that will enable even more success next year or if you would like to contribute in any way.

Meanwhile, on behalf of the Burford Festival trustees, I would like to thank you all for your continued support.

Deborah Knight - Chairman of the Trustees

FRIENDS OF BURFORD LIBRARY

We have organised an event you just cannot afford to miss. Make your way to the Royal Oak Pub in Witney Street on Thursday 27 February for an evening of gastronomic delight and brain-searching ingenuity.

The famed annual Pub Quiz commences at 8pm, preceded at 7pm with a tasty supper of the Royal Oak's best 'fish & chips.'

Tickets at £20 each are available from the Royal Oak. But, hurry, as tickets are selling fast and you don't want be disappointed. Team size is limited to a maximum of six people.

Our plans to succeed in entertaining you, not just through the delights of the many books available in our library, continue with our mid-summer Pimms and Poetry event. More details to follow.

We can also announce that the library was in receipt of a very kind donation from the Burford Festival Committee. Our thanks to both the organisers of the many Festival events and to all the people who support this wonderful biennial extravaganza.

At the end of last year we met with representatives of Oxford Library Services and are happy to confirm the County intends to continue in its support of our invaluable local resource.

As the snowdrops and daffodils show their cheery faces in our gardens, reminding us that spring is on its way, why not decide to relax in your favourite armchair with a "can't put down" book?

The warmth and friendliness of Burford Library waits to welcome you.

Maureen Percival



BURFORD ORCHESTRA

Presents
A Spring Concert

Beethoven
Symphony No. 5 in C minor

Von Weber
Der Freischütz Overture

Dvořák
Symphonic Variations on the Theme 'I am a fiddler'

Conductor: Rhian Frankcom

7.30pm, Saturday 29th March 2025

Venue: St Mary the Virgin Church, Witney
Tickets: £10, U16s: £1, available in advance from TicketSource and www.burfordorchestra.org.uk



Don't forget to look at our website www.thebridgeburford.co.uk too for updates on local news, previous features and topical photographs

And for more photos about Burford events do look at Burford Life on Facebook



theWI
INSPIRING WOMEN

In January, we held two events. Firstly, our January meeting via Zoom, learning about the resolutions for this year for the NFWI, where we need to select from the following shortlist one that will have the focus from WIs: Let's talk about incontinence; Bystanders can be lifesavers; Join the repair revolution and eliminate landfill of medication packaging. We also had our fabulous annual evening meal for members for the second year running at the Burford Golf Club. A good chance for us all to catch up.

At our meeting on Tuesday 11 February at our usual venue the Burford Baptist Church, we are going to be doing an active healthy meeting with "Fitness, your Balance and your Brain - by Jennifer Cowling". I think we are all eager to know what exercises can help with our balance and our brains. It will be casual wear, something you are comfortable in for exercise and trainers. The committee will need to work out (no pun intended) whether to do drinks/cakes at the beginning or end of meeting to fit best with the exercise session.

Our 11 March meeting will be our AGM and we are planning to have a pizza supper and chance to share what the plans are for the year going forwards as well as look back to all that we did in 2024. We will be voting on the committee as well as the standard AGM. We will also have a fun game to go with the meeting. We did do a Beetle drive one year which was so much fun.

We are also keen to plan ahead to think about what the FAB WI can do towards the 80th Anniversary of VE day on Thursday 8 May and see what other WIs are doing in Oxfordshire.

We are always keen to welcome new members and guests are always very welcome to any of our meetings for a suggested donation of £5. So, we look forward to welcoming any of you interested.

The FaB WI meets on the second Tuesday of each month in the Baptist Church in Witney Street at 7.30 p.m. For further information please visit our website thefabwi.org.uk or contact me.

Jennie Craven - President, thefabwi@oxfordshirewi.co.uk or Mobile 07710 103015.

EDITORIAL POLICY

As is customary with publications, the decision of the editors on what can and cannot be published is final. In particular, they will edit or decline to publish anything which in their opinion includes personal attacks on any individual, is expressed in unduly partisan language or is offensive, in bad taste or potentially defamatory. Opinions expressed by contributors are entirely their own and the appearance of any letters or articles in The Bridge does not indicate that the editors agree with them. Items may also be edited and may be rejected. Where items or services are offered for sale, or advertised, the provider is responsible for ensuring that the goods or services are safe and of good quality. The editors may refuse to publish advertisements or other statements about unsuitable items or services. The Bridge does not accept responsibility for the accuracy of advertisements and does not endorse any goods or services which are advertised. All items submitted for inclusion must give the name and address of the writer and an email address or telephone number. By submitting any article, announcement, letter or advertisement to The Bridge you are deemed to have agreed to the above.

All advertisements in The Bridge are accepted subject to The Bridge Terms and Conditions of Advertising 2021 which can be viewed on our website www.thebridgeburford.co.uk.

PLEDGE TO MAKE A DIFFERENCE THIS YEAR

The arrival of a new year often means a time of reflection. For many they think about what they would like the next 12 months to bring and what changes they can introduce. Volunteering is often a popular choice and one that can be tailored completely to your skillset, experience, interests and commitments.



Whether you have a little or a lot of time to offer, charities are delighted to welcome volunteers from all walks of life.

The best place to start is the Oxon Volunteers website. This hub for volunteering vacancies enables you to search by distance from your home to find very local opportunities and remote, homebased ones: <https://oxonvolunteers.org/> <Pledge to make a difference this year.docx>

Danielle Hilton



Thursday 27 February

7pm supper / 8pm quiz

Tickets £20

(include entry to the quiz and your 'fish & chip' supper)

The Royal Oak, Witney Street, has kindly allowed the Friends of Burford Library to hold a pub quiz to support the Library AND has donated a prize of 2 bottles of wine to the winning team. Please join us for an evening of head-scratching enjoyment!!

Book your team (max 6 people) in through The Royal Oak on 01993 823278 or info@royaloakburford.co.uk

WODC COUNCILLOR REPORT

In December the government announced the largest change to local government in over 50 years through the publication of the English Devolution White Paper. This paper included two main elements that will fundamentally change the structure of local government.

The first is the creation of 'Mayoral Strategic Authorities' that would sit above current councils and would receive additional funding and powers to have more control and influence at a regional level. This would be over aspects such as transport and local infrastructure, housing and strategic planning, and economic development and regeneration. They would be led by an elected mayor and be supported by a council of leaders from the constituent local authorities.

The second is the proposal to remove the district tier of local government where this exists, e.g. in Oxfordshire where the county council (OCC) and district councils deliver different services. For example, the West Oxfordshire District Council delivers services such as bin collections, planning, homelessness support and off-street parking among many others. OCC is responsible for services such as road maintenance, public health, adult social care and education.

In the future model, each area would be covered by a 'unitary authority'. This would mean West Oxfordshire would form part of a larger area that would have all council services delivered by a single council.

No changes are currently proposed for the role of parish and town councils.

The government has set an ambitious timetable for the reform with changes to council structures and the formation on the new strategic authorities due in the current parliamentary term. The phasing and timing of changes in specific areas will be decided over the coming months.

So what is happening locally? OCC has written to the government asking to be fast-tracked in this process, but does not yet have concrete proposals for who its partners will be in a Mayoral Strategic Authority. I understand the combined area could include Oxfordshire with one or more of Buckinghamshire, Berkshire and Swindon. It has also expressed support for the creation of a unitary authority. I think it is most likely this would be based on Oxfordshire as a whole, but other combinations of districts or boundary changes are being discussed.

And elections? I think it is most likely that the OCC elections will continue to take place in May this year. However the tenure of the newly elected county councillors may well be short. It is likely that in May 2027, OCC and WODC will cease to exist and elections will be held for the new unitary authority in newly defined wards.

What does this mean for residents? I hope the answer is "very little" over the next two years. Services will continue to be delivered and the local plan will continue to be developed. In the longer term? We will just have to wait and see!

Hugo Ashton

District Councillor for Burford, Fulbrook and Taynton

hugo.ashton@westoxon.gov.uk or 0771 2490517



EDITORIAL POLICY

As is customary with publications, the decision of the editors on what can and cannot be published is final. In particular, they will edit or decline to publish anything which in their opinion includes personal attacks on any individual, is expressed in unduly partisan language or is offensive, in bad taste or potentially defamatory. Opinions expressed by contributors are entirely their own and the appearance of any letters or articles in The Bridge does not indicate that the editors agree with them. Items may also be edited and may be rejected. Where items or services are offered for sale, or advertised, the provider is responsible for ensuring that the goods or services are safe and of good quality. The editors may refuse to publish advertisements or other statements about unsuitable items or services. The Bridge does not accept responsibility for the accuracy of advertisements and does not endorse any goods or services which are advertised. All items submitted for inclusion must give the name and address of the writer and an email address or telephone number. By submitting any article, announcement, letter or advertisement to The Bridge you are deemed to have agreed to the above.

All advertisements in The Bridge are accepted subject to The Bridge Terms and Conditions of Advertising 2021 which can be viewed on our website www.thebridgeburford.co.uk.

THE MADHATTER BOOKSHOP

"You have such a February face, so full of frost, of storm and cloudiness".William Shakespeare.

Welcome to the month of love! On that theme I and the team would like to thank every one of you for voting for The Madhatter Bookshop making us 'The Best Bookshop in the Cotswolds'.

During the last few weeks we have been very busy restocking the bookshop with books we think you will love to read and love to give.

We have also been refurbishing Little Madhatter Emporium with books for under 12s. Did you know that if you read one story to your little one per day they will have read 1825 books by their 5th birthday and you will have created some fabulous memories and given them the greatest gift of all, a love of reading.

We are planning the launch of our Junior Book Club and Storytime for pre-schoolers but need your help. Is this something you might be interested in for your little ones? What days would work best? Please register your interest and let us know your opinions at themadhatterbookstore@gmail.com.

We also visited London International Toy Fair. This is one of the biggest Toy Trade shows in the world and as well as the big players we searched out the tiny independents to bring you the best toys and family games for you and yours.

SAVE THE DATE. Burford Literary Festival will take place 26 – 28 September. Details will be available at www.burfordlitfest.co.uk

See you soon, book lovers.

Kim and the team.

Congratulations to Kim for winning the award of the Best Bookshop in the Cotswolds 2024 - Ed

MARATHON FOR SILVER STAR

I am running my first London Marathon in 2025 in memory of Dr Simon Albert, a dear friend and colleague who died suddenly in 2023. He was my inspiration, a hugely dedicated and exceptional GP, and a very kind man. Simon supported Silver Star with his wife Beth over the years and Beth believes that Silver Star is the charity that Simon would have wished me to support in his memory.

The Silver Star Maternity Fund's Aim is:

"To make things better for Oxfordshire mothers and their families, to raise money to keep the Silver Star Unit well equipped, and to improve the comfort and amenities for ALL women during their stay at the Women's Centre, and to support research into important problems of pregnancy".

Any support would be very gratefully received - please see my Just Giving page under "sarah-purvis-1723039549863" or there is a donation box at Burford Surgery. Many thanks,
Dr Sarah Purvis





Have you recently needed health or medical care immediately or the same day in Oxfordshire?

Healthwatch Oxfordshire would like to hear from anyone who has needed urgent or emergency care or help in Oxfordshire in the last two years. This might include calling NHS 111 or your local GP practice, going to a hospital Accident and Emergency (A&E) department, or contacting a mental health crisis team.

We'd like to know what you understand about these health services, what information you used to find out about services, and your experience of getting the right help quickly. Your feedback will help us understand your experiences and identify areas for improvement.

To tell us about your experiences, please complete our short online survey at <https://www.smartsurvey.co.uk/s/UECservices/> or by scanning the QR code below.

The survey is anonymous and will be open for comments until Monday 17 February.

If you would rather talk to someone about your experience, or would like a paper copy or translated version of the survey, please contact Healthwatch Oxfordshire on 01865 520520 or at hello@healthwatchoxfordshire.co.uk

To find out more about the work of Healthwatch Oxfordshire see www.healthwatchoxfordshire.co.uk
Vicky Tilley



BURFORD ENVIRONMENTAL ACTION GROUP, AKA BEAGLES

Mid Windrush Land and Nature Group (a Beagles working group) has been building on its successful autumn events (including our family Bug Safari, and Survival Ecology workshop). Our vision is to support all the great existing works for nature across our area, and engage with many more people, to better understand and enjoy the landscape and nature treasures we have in our area and how we can help them be thriving and resilient for the future. Besides the 15 February Community workshop on 'Our Past and Future Landscape' (understanding our historic land use to help us plan a thriving future one), the Land and Nature Group is preparing a calendar of activities for the rest of 2025, including tours of local inspiring sites/activities, family bug hunts and other learning/discovery sessions, 'citizen science' workshops on observing/identifying plants and trees, birds etc, and practical things we can do for our gardens, hedgerows and verges. If you'd like to support or join in, or have other ideas, questions etc, do get in touch.

AS you may recall from the December edition, we will be holding our second Eco Day on 15 March, at the Warwick Hall. We'll be looking at four different areas, **Land, Energy, Transport and Community**, including films during the day, presentations, workshops and many other things besides. We'll have a lot of representation at both county and district level, with lots of handy energy-saving tips - handy, as the temperatures outside is -5 degrees as I write this! As regards transport, we will be holding a series of EV education sessions throughout the day, entitled "Confused between your kW and kWh? Your ppkWh from your ppm?" Learn more about both the economic as well as the environmental benefits of EV ownership with one of our members, a professional in the industry. One of the films we'll be showing that looks at the climate crisis from a slightly different angle is *Climate Lens*, which highlights its effects on mental health. In addition, we'll be focusing on nature recovery, buying and sourcing local, and the cost benefits of the low carbon economy and the energy transition - please keep the date free in your diaries, from 11.00am to 4.00pm.

BEAGLES meetings are on the third Monday of every month, at 7.30pm. Our new venue is the Burford Baptist Church. Separate to our regular meetings are events to which all are welcome: slightly too late for this edition, I suspect, Jean Smith, local social anthropologist, will be giving a talk on Seed Landraces; these are locally adapted, genetically-diverse, promiscuously pollinating food crops. Landraces are intimately connected to the land, ecosystem, farmer and community. Landraces offer food security through their ability to adapt to changing conditions. If you enjoy the spoils of growing abundant vegetables, but are tired of all the cost and labour it requires, then this talk is for you. Please join her and us at the Carpenter's Arms at 6.30pm on 29 January to learn more. Details on our website at burforbeagles.org/upcoming-events.

You can also get involved in other ways: repair cafés, tree-planting, litter-picking or even helping us with our social media. Get in touch if you would like to know more.
Andy Hayter - beagles.burford@gmail.com



WHO OWNS OUR WATER?

By the time you read this, we should know whether Thames Water has been allowed to secure a £3 billion loan to fend off its impending collapse which has resulted from the £16 billion of loans it took on when interest rates were low but now cost it - or rather us, the billpayers, a fortune.

In mid December, WASP wrote to the High Court judge being asked to authorise this loan, to ask for the so far excluded billpayers - we say, the creditors in waiting, to be considered as such. With our MP, Charlie Maynard, we delivered our letter in person in front of the media, with co-campaigners outside the Royal Courts of Justice.

We already pay about 33p of every pound of our bills just to service the company's £16 billion of unnecessary debt, so we ask when will government step in and take administrative control to protect us, as the law provides? When we get to 40p, 50, 60 or even 90p in the pound because this company started with zero debt and has not been spending the money on making services better, it has been feeding shareholders and delivering unjustifiable bonuses to senior executives, apparently for that misdirection of funds. A note of thanks, however, to the honest hardworking employees of the company, some of whom we know and respect greatly for their efforts in impossible circumstances.

The story of this water company reads like a script of a movie. Privatised along with nine other regional water authorities in England and Wales but not in Scotland, the new companies were freed from existing debt at taxpayers' expense, sold at a fraction of their true value and even given a green bonus to help them on their way.

A brief period of optimism then followed as members of the public made a decent profit selling the shares they had bought to the private equity funds that smelled guaranteed cash from an essential product and a monopoly service. The exploitation "fest" and the rest is history but a lot of the story is so shocking that it is constantly mistold by water companies, regulators and governments. They each, sadly, have vested interests in hiding the truth.

Our water does not have to be used as a cash extraction tool for clever financiers who will always outwit regulators and a return to public ownership is certainly not the expensive option government ministers claim it to be.

WASP will be presenting 'Who owns our water?' at the Warwick Hall at the end of February. It's a gripping story and some of the best and worst bits are still being written.

Tickets free - donations welcome
Victoria Marsh - www.windrushwasp.org



THE BRIDGE TIMETABLE AND CONTACTS

The closing date for entries to the editorial sections of the magazine is 10th of the month preceding publication. Please send articles and information to:

editor@thebridgeburford.co.uk

Alternatively, you can leave letters and articles at the Post Office in Burford for us to collect.

Advertisements need to be booked before the 10th of the month preceding publication. Please contact:
advertise@thebridgeburford.co.uk

FENELLA PEARSON

1933-2024

Fenella Pearson was brought up in Wimbledon. After leaving school she trained as a teacher at Roehampton. She held teaching positions in Ipswich and



Norwich and was appointed at an unusually early age as headmistress of Stormont Preparatory School for Girls at Potters Bar in Hertfordshire. She remained there until 1993 when she retired and moved to Burford. She became a committed member of Burford Parish Church, serving as a churchwarden from 2000 to 2007 and providing much wise advice to the church community. She remained in Burford as her health

declined and spent her final days at the Burford Nursing Home. Her funeral took place in the parish church on 13 January.

DIANA BRAZIER

Diana Brazier passed away at her home on 4 December aged 84. Diana moved to Oxfordshire in 1982 and joined the congregation at Fulbrook Church. For many years she was secretary of the PCC at Fulbrook.

Richard Brazier

Would you like to volunteer with The Willow Trust?

Join our team of volunteer helpers and enjoy the benefit of the tranquillity of the beautiful Gloucester-Sharpness Canal while accompanying our guests on a day out on the water on board Spirit of Freedom II and Leonard Matchan.

Spend 14 days on the water between April and October and join us in giving a day of unparalleled fun and freedom to around 7,000 disabled and seriously ill children and adults with their carers each year.



Our boats are purpose-built for our guests, offering unlimited access via wide ramps, stunning views through the large windows of the wildlife on the water and along the banks, access to the wheelhouse on a hydraulic lift where everybody is given the opportunity to steer the boat with the help of our adjustable steering units.

No boating experience is required. If you are interested in hearing more, please call Sophie on 01285 651661 or email admin@willowtrust.org

We look forward to welcoming you to the Team!

LOCAL BIRD SIGHTINGS

We are very grateful to Shilton resident Ian Lazarus for sharing his local photos of a wren, robin, chaffinch, yellowhammer and a kestrel.



DIARY OF SPECIAL EVENTS

Tue 11 Feb	FABW1 - Fitness, Your Balance and Your Brain	Baptist Church	7.30pm
Wed 12 Feb	Lenthall Concerts - Wells Cathedral School - Mozart, Mendelssohn, Ewald	Burford School	7.00pm
Wed 12 Feb	TASC Lecture - Velasquez and Goya	Warwick Hall	10.50am
Sat 15 Feb	Free Community Workshop - Our Past and Future Landscape	Warwick Hall	10am-3pm
Sun 16 Feb	Asthall Manor Winter Open Day	Asthall Manor	
Sun 16 Feb	Snowdrop Sunday	Burford Priory	10-3pm
Tue 18 Feb	Burford & District Society AGM and talk about Cotswold Wildlife Park	Warwick Hall	7.00pm
Fri 21 Feb	Rissington Local History Society talk about Cleeve Hill	Upper Rissington Village Hall	2.30pm
Sat 22 Feb	Windrush Film Night	Windrush Village Hall	7.30pm
Wed 26 Feb	TASC Special Interest Day - Adventures in Textiles	Warwick Hall	10.45am
Thur 27 Feb	Friends of Burford Library Pub Quiz	Royal Oak, Burford	7.00pm
Wed 5 Mar	Free Auction Valuation (Chorley's Auctioneers)	Cotswold Hall Northleach	10am-12pm
Sat 15 Mar	BEAGles Event - Land, Energy, Transport and Community	Warwick Hall	11-4pm
Fri 21 Mar	Talk - Hidden Treasures in Parish Churches	Fulbrook Church	6.30pm
Sat 22 Mar	Kathleen Ferrier Whattalife! northleachevents.co.uk	Northleach Church	7.00pm
Tue 25 Mar	Nicola Cornick talk - Jane Austen's connections in the Vale of the White Horse	Burford Library	7.00pm
Sal 29 Mar	Burford Orchestra Concert	St Mary the Virgin Church Witney	Tue 11
Fri 11 April	Opera at the Movies - London Festival Opera northleachevents.co.uk	Northleach Church	7.30pm
Tue 15 April	Burford & District Society talk about Burford and its buildings	Warwick Hall	7.00pm
Thur 8 May	VE Day 80th Anniversary	TBA	TBA
20-22 June	In the Footsteps of the Mitfords	Asthall Manor	TBA
Wed 2 July	Much Ado About Nothing	Asthall Manor	TBA
26-28 Sept	Burford Literary Festival	TBA	TBA

Sometimes this information is changed without notification to us, so please check before turning up to an event.

REGULAR LOCAL EVENTS, CLUBS AND SOCIETIES

Aerobics	Monday 6.15; Thursday 11.45 + 6.15pm	Warwick Hall	Gill Hames 822971 gillianhames46@gmail.com
Alcoholics Anonymous	Wednesdays 7.30pm; Fridays 1.00pm	Bradwell Village Hall	Patrick 0786 796 0716
Astally Arms	Last Friday of the month	Memorial Hall Asthall Leigh	From 7.00 pm
Badminton Group	Monday nights. Friendly all abilities.	Burford School 8-10pm.	Kevin 704655 scareyradar@yahoo.co.uk
BEAGles aka Burford Environment Action Group	Third Monday of the month	The Prince of Burford	7.30pm
Burford Bridge Club	Every Tuesday 5pm - 7pm	Warwick Hall	07831 301886 Amir Hashimi
Burford Badminton Club	Tuesday nights 8-10pm	Burford School - fun, social, all abilities	Vijay 891043 vijaysmobile@gmail.com
Burford Crafters	3rd Wednesday of the month	Burford Library 2.30-3.30	Judith Butcher 01993 824194
Burford & District Society	Meet 7 times a year	Warwick Hall at 7.00pm	Bert Clough 07943 720668
Burford Town Bowls Club	Friendly Roll-up all Mondays	Bowls Club from 6.30 pm	Pat Walker 01993 822330 patr47@btinternet.com
Burford Trees care/planting	4th Sunday of the month	Community Allotment - Tanners Lane	lucy.staveley@gmail.com
Coffee and Company	Every Wednesday 10.30-12 midday	St John the Baptist Church	Diana Peters 01993 822785
Cub Scouts	Mondays (term time)	Scout Hut 6 - 7.30 pm	Mandy Bielby 07941 470465
Fencing	Tuesdays	Bradwell Village 7-9pm	Keith Money 01982 448295
Fulbrook & Burford WI (FaBWI)	Second Tuesday of every month	Burford Baptist Church Hall	Jennie Craven 07710 103015 thefabwi@oxfordshirewi.co.uk
Fulbrook Coffee am	Every 3rd Thursday	Fulbrook Meeting Place 10.30 - 12	Lyn Bibbings 823640
Fulbrook Fitness Group	Thursday (wef Sept 2021)	Fulbrook Meeting Place 9am	Pat Ferrett 822892
Horticultural Association	Fourth Thursday	Bowls Club - times vary	Janet Copley 01451 844210
North Cotswold Arts Assoc.	Every 2nd Wednesday	Warwick Hall	2-4pm
Pickleball - fun, social sport	Mon 11-1pm, Thu 10-12pm, Fri 8-10pm	Charlbury Community Centre	Vijay 01993 891 043 or vijaysmobile@gmail.com
Pilates Class	Wednesdays 10.00am	Burford Baptist Church	Elizabeth Jarvis cotswoldpilates123@gmail.com
Pilates Class	Thursdays 9.30am. Suitable for men and women; Tuesdays 6.45	Warwick Hall	Elizabeth www.wellnessity.co.uk 07932 981023
Rhyme Time	Friday 9.15-10.00 am Term Times	Burford Library (for under 5's)	Carol-Amy Holdcroft 823377
Rock-a-Tots	Tuesday during Term Time 9.45-11.15	Warwick Hall	www.burfordchurch.org/rockatots
Rotary Burford & Kingham	Monday	The Burford Golf Club	John Smith 07717 883182
Signpost - Coffee and Help	Every Wednesday in term time.	The Warwick Hall, Burford 10.00 - 12 midday	Opportunity to raise worries confidentially
Scouts	Thursday (term time)	Scout Hut 6 - 8pm	Alex Gill 07762161769 burfordscouts@gmail.com
Scrabble	1st Tuesday of each month	Burford Library (free soft drinks)	7pm
The Arts Society Cotswolds	2nd Wed (not July/Aug)	Warwick Hall 11.00	publicity@theartsocietycotswolds
The Wychwood Lodge of Freemasons	3rd Thursday Sept-April	The Masonic Hall 31 Sheep Street	Mike 868302 / Allan 822240 wychwood988@outlook.com
Time Out	Monday 11.00am - 3pm lunch and afternoon tea	Warwick Hall inc games, bingo, singing, talks	John Harrington 822451 or Sue Sheppard 824729
Windrush Film Nights	Last Saturday of the month	Windrush Village Hall	7.30pm windrushcinema@gmail.com Dan Boyle

CHURCH SERVICES

BURFORD BENEFICE

St John the Baptist, Burford

2nd February	
Morning Service	11.00am
Evening Meeting	7.00pm
9th February	
Choral Matins (BCP)	9.30am
Holy Communion	11.00am
Evening Meeting	7.00pm
16th February	
Holy Communion (CW)	9.30am
Morning Service	11.00am
23rd February	
Morning Prayer (CW)	9.30am
Morning Service	11.00am
Evening Meeting	7.00pm

Every Wednesday at 10.30am we have Holy Communion Service followed by Coffee & Company in the Church

St James the Great, Fulbrook

9th February	
Morning Prayer (CW)	9.30am
16th February	
Matins (BCP)	9.30am
23rd February	
Holy Communion (BCP)	9.30am

St John the Evangelist, Taynton

2nd February	
Benefice Holy Communion (CW)	9.30am
16th February	
Evening Prayer	6.00pm

St Nicholas, Asthall

6th February	
Evening Prayer	6.00pm
23rd February	
Evening Prayer	6.00pm

St Mary's, Swinbrook

2nd February	
Holy Communion (CW)	11.00am
9th February	
Morning Prayer	11.00am
16th February	
Morning Prayer	11.00am
23rd February	
Morning Prayer	11.00am

9.30am and 11.00am services in Burford are also live streamed. Swinbrook services are available to catch up on Monday. These can all be found on our website or YouTube channel.

Tom Putt

ST JOHN FISHER AND ST THOMAS MORE

Sunday Mass: 9.30 am

Weekday Masses:

Tuesday - 10.00 am

Thursday - 10.00 am

Friday 1 November - All Saints Day - Mass at 7.00pm

For updates please see catholicchurchburford.org.uk or the church noticeboard for details.

Dan Boyle

BURFORD QUAKER MEETING

Pytts Lane, Meeting for Worship every Sunday at 11.00 a.m.

Myra Ford 01451 810484, or Graham Hadley 01993 875214

BURFORD BAPTIST CHURCH

Welcome to Burford Baptist Church. It's now a lovely warm space with a new heating system in place. We want the community to come and use our facilities and we are happy to negotiate rates for hire depending on the event.

We have a growing number of regular users including FAB WI meeting on the second Tuesday evening of the month and pilates meeting every Wednesday at 10am.

Both would welcome new people to join them at BBC.

Do get in touch.

Gill Crippen

SIGNPOST

Come and chat to someone over a cup of coffee about a matter you are struggling with. A team of volunteers from Burford Church will be available to listen and do their best to help.

All matters will be dealt with confidentially.

The Warwick Hall, Burford

Wednesdays during term time only 10.00am to 12.00 noon.

serie o Choral Matins ill tae plae at t ohn the Baptist Churh at 9.30am on unday. ll are elome.

USEFUL CONTACTS + INFORMATION

Please check hours of opening which are subject to change

Burford Recreation Pavilion (Children's Events)

01993 823647

Burford Pre School 01993 824031

Burford School 01993 823303

Burford Primary School 01993 822159

Burford Surgery 01993 822176

www.burfordurgery.co.uk

Burford Tolsey Museum

Open seven days a week

April to October 2-5pm

www.burfordtolsey.org

Burford Town Council

Tolsey office open Monday, Wednesday

and Friday between 9.30 am and 11.30 am

01993 823647

Email town.clerk@burford-tc.gov.uk

www.burford-tc.gov.uk

Carterton Health Centre

01993 841718

NHS

111

www.nhs.uk

Centre for Carers in Oxfordshire

01295 264545

www.oxoncarers.org.uk

Chemist Reavley's

01993 823144

Chipping Norton Veterinary Hospital

Burford Branch 01608 642547

Churches

Anglican St John the Baptist 01993 823788

Roman Catholic 01993 823219

Church of SS John Fisher and Thomas More

Baptist Church 07967 362885

Friends Meeting House 01993 875214

Citizens Advice Bureau

0808 2787908

Email admin@cawo.org.uk

Community Transport

Volunteer Link-Up 01993 776277

Oxfordshire Comet 01865 323201

Emergency Services

Police – non essential 101

Environment Agency

Floodline 0845 988118

Emergency 0800 807060

Hall Bookings

Baptist Church gill.crippen@googlemail.com

Burford Town Bowls Club 01993 822330

Fulbrook Meeting Place TBA

Taynton Village Hall - Lexi Young 07909 913994

Warwick Hall Bookings and Information

bookings@burfordchurch.org.uk

Library

01993 823377

Tuesday 13.00 - 18.00

Thursday 10.00 - 13.00

Friday 10.00 - 13.00 and 14.00 - 17.30

Saturday 09.00 - 13.00

www.oxfordshire.gov.uk/burfordlibrary

Member of Parliament

Charlie Maynard 07487 708681

charlie.maynard.mp@parliament.uk

Oxfordshire County Council

General Enquiries 01865 815573

Highways 08453 101111

Faulty Street Lights 0800 317802

www.oxfordshire.gov.uk

Oxfordshire County Councillor

Nicholas Field-Johnson 01993 878309

Post Office 01993 822174

stephencolter@aol.com

Recycling Centre

Dix Pit, Lynch Hill, Stanton Harcourt

Open 7 days a week 8am - 5pm

Thursday late night until 8pm

Closed Christmas Day and New Year's Day

Southern Electric (Freephone) 08000 727282

Thames Water 0800 3169800

Travel

Rail Enquiries 08457 484950

Public Transport Enquiries 08712 002233

West Oxfordshire District Council

General Enquiries 01993 861000

Out of Hours 01993 705056

www.westoxon.gov.uk

West Oxfordshire District Councillor

Hugo Ashton 07712 490517

Witney Hospital Minor Injuries 01865 903841

Open 10.00am – 10.30pm daily

Last Patient seen at 10pm

Witney Police Station, No front counter

www.thamesvalleypolice.uk

DIRECTORY OF LOCAL BUSINESSES & SERVICES

Company Name	Business Type	Phone
Antiques @ The George	Award winning, friendly antiques centre	01993 823319
CJD Architects	Chartered Architects	01993 823646
Hickman Brothers Landscapes Ltd	Garden Design and Construction, Landscape and Garden Supplies www.hickmanlandscapes.co.uk	01993 822226
Jenny Smith	Spanish & French tutor. Building confidence GCSE/KS2. Experience in schools; DBS check held.	07908 602547
Kendall & Davies Solicitors	Expert, friendly, client-focused legal services with offices in Burford. www.kendallanddavies.co.uk	01993 822025
Taylor and Fletcher	Estate Agents / Chartered Surveyors / Fine Art Auctioneers and Valuers / Commercial Agents / Rural Specialists	01993 220579
Mallams Auctioneers Ltd	Auctioneers and Valuers	01242 235712
Pauline Carter BA AmusLCM CTABRSM MISM	Piano Teacher	01993 774568
Peter Garratt	Painter and Decorator	01451 810376 07788 896496
StayCotswold	Holiday/Short Lets, Relocation, Corporate Stays, Property Search, Sales & Lettings. www.staycotswold.com	01993 259444
Thomas Ellis-Rees	Clock & Barometer repairs. tellisrees@gmail.com	01993 822132
Vick's Byway Garage	Bushey Ground, Minster Lovell, Witney, OX29 0SW. MOTs by arrangement	01993 823142
VJ Hancock & Co Ltd	Certified Accountants / Chartered Tax Advisers www.vjhaccountancy.co.uk	01993 822817
Lionheart Later Life Planning and Probate	Wills – Lasting Powers of Attorney – Trusts and their registration – Fixed fee Probate – Equity Release and Free Financial Advice. www.lionheartlaterlifeplanning.co.uk	07769 730616.
EiWell	Physiotherapy, Occupational Therapy, Nutrition Helping people stay independent as they get older	01865 238185
Burford Foot Clinic	Chiropody Castles Yard, Pytts Lane, OX18 4SJ	07884318091
Adam Carter Chauffeur Services	Local Private Hire Chauffeur www.adamcarterchauffeurservices.co.uk	07920 135157
Tony Williams	Welding/Brazing/Soldering & Metalwork Home/Garden & General repairs & alterations	07722334696
Fairways Cotswold Explorer	for all your Airport & Cruise transfers	01993823152 07751472125
The Stone Gallery	Makers of Gold and Silver Jewellery, agent for Georg Jensen. Paperweights & Pictures. www.stonegallery.co.uk	01993 823302
NFU Mutual	Insurance Pensions Investments - Call your local Witney agency	01993 776716
Patti Good	Therapist, Teacher & Healer Free Online Guided Meditation Classes www.pattigood.com	07880 998568
Radnor Martin	Estate agents covering Burford and the surrounding villages	01993 765115
TC Garden Services	Gardening, Landscaping, Patios, Decking, Fencing & Gates, Raised Beds. Contact Tony for a free quotation. www.tcgs.uk	07771 888304
Samantha James	Regarded organic - Private Hairstylist - Experienced. Email - samloujam@googlemail.com	07772 601495
J Coles Plumbing & Heating	For all your plumbing emergencies/needs and bathroom refurbishments.	07947693427
Oxford Construction	Building, Groundworks and Project Management Services Email; enquiries@oxfordconstruction.co.uk	01865 922001
Grimebusters	Dirty carpets? Upholstery? Call Grimebusters - your local professional cleaners. Competitive rates. Free estimates.	01993 868924
Woodgrove Estates	Contemporary offices to let in Fulbrook. office@woodgrove-estates.co.uk	01993 640004
Piano with Victoria	Lessons for all ages and abilities in Burford. ABRSM + improv / songwriting lessons.	07737493980
Funtastic French, Lou Rutterford	French Language Coach. www.funtasticfrench.co.uk	07913 905484

**Please let us know if any details need
amending.**

editor@thebridgeburford.co.uk

corky & prince
WEDDING & EVENT FLOWERS




This Valentine's Day, *break free* from the ordinary.

Our unforgettable bouquets celebrate individuality and true love. Expect unexpected combinations of colours, intriguing textures, and captivating scents.

Get in touch with local florist Fi Passey on 07740 589640 or email hello@corkyandprince.com to pre-order your *extraordinary* flowers now.

The Bridge reader special offer
Pre-order by 5th February for complimentary delivery to Burford addresses on 14th February
www.corkyandprince.com

HARRY JAMES
Gardens & Landscapes

Mobile: 07985 434080

email: info@harryjamesgardens.co.uk

www.harryjamesgardens.co.uk

FOR YOUR LOCAL GENERAL BUILDING REQUIREMENTS

GENERAL BUILDER
RENOVATIONS
EXTENSIONS
ALTERATIONS
IVOR LAVERS

SPECIALIST IN DRY STONE WALLING
BRICKWORK - BLOCKWORK
PLASTERING - ROOF REPAIRS
INTERNAL AND EXTERNAL PAINTWORK - LANDSCAPING
TILING - CARPENTRY

BASED IN BRIZE NORTON
HIGHLY RECOMMENDED
REFERENCES AVAILABLE
07866 748481



ROOMS AVAILABLE TO HIRE
BURFORD QUAKER MEETING HOUSE

Quiet central location peaceful period premises with kitchen and garden

IDEALLY SUITED FOR:-
personal consultations, writing studio
stud circles, group meetings
musical activities

Contact:
igel raithwaite el
ue shton el
mail asco mill aol com



BAKERY ON THE HILL

Classic Fresh-Baked British Loaves, Breakfast Favourites, Artisan Coffee, Scrumptious Toasted Sandwiches, Quiches and Home-Baked Pastries.

There's always something to enjoy at Burford's Bakery on the Hill.

Open 7 Days a week from 8am-5pm
53 High Street, Burford
01993 823898

Google ★★★★★

Peace of Mind While You're Away?
Local House Sitter

Experienced, trustworthy, personalised service

Security:
your home doesn't look empty
Mail, parcel & bin management

Domestic Emergencies:
minimise effects of adverse weather

Pets:
happier at home with their routine

Trusted Professional:
Fully insured, DBS checked, excellent references from satisfied customers

contact: helen@propertyandpetcare.co.uk
www.propertyandpetcare.co.uk



MOSSINATOR
ROOF CLEANING SYSTEMS

Enhance the appearance of your property with our quality assured friendly service

Moss Removal & Roof Cleaning - Render & Brickwork Cleaning
Patio & Driveway Cleaning - Gutter Clearing
Installation of Bird Protection & Chimney Cowls
info@mossinator.co.uk - 01993 670005



COTSWOLD GATE

BURFORD
A PORTHAVEN CARE HOME



Book a visit and enjoy a complimentary afternoon tea at Cotswold Gate Care Home

To RSVP or to find out more, visit porthaven.co.uk or call 01993 222800

34 Forest Grove, Burford OX18 4FF

NURSING • RESIDENTIAL • DEMENTIA • RESPITE



Gateway Furniture & Design Burford

A solid oak table with square tapering legs - can be made to any size in various finishes to your own specifications - 6 week delivery

Tables built to your own specifications in 6-8 weeks

Monday-Saturday 10am-5pm,
Sunday 1pm-4pm

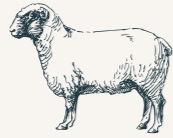
Cheltenham Road, Burford Roundabout,
Burford, Oxon OX18 4JA
01993 823678

Our online brochure can be downloaded from our website
www.gatewayantiques.co.uk

E TAYLOR & SON FUNERAL DIRECTORS

Private funeral home
Memorials supplied and renovated
Here to help 24 hours per day

01993 842421
Corbett Road, Carterton, OX18 3LG



COTSWOLD INNS & HOTELS



↔ A COLLECTION OF SEVEN 3 & 4 STAR HOTELS ↔

↔ ALFRESCO DINING ↔

↔ SECLUDED GARDENS ↔

↔ ROSETTE AWARDED RESTAURANTS ↔

↔ PERFECT WEDDING & CONFERENCING LOCATIONS ↔

TO MAKE A RESERVATION PLEASE EMAIL
enquiries@cotswold-inns-hotels.co.uk

or book online at www.cotswold-inns-hotels.co.uk



The Bear of Rodborough
Stroud
T 01453 878522

The Swan Hotel
Bibury
T 01285 740695

The Lamb Inn
Burford
T 01993 823155

The Bay Tree Hotel
Burford
T 01993 822791

The Manor House Hotel
Moreton-in-Marsh
T 01608 650501

The Hare & Hounds Hotel
Tetbury
T 01666 881000

The Close Hotel
Tetbury
T 01666 502272



Mallams

1788

Thinking of selling your Jewellery, Silver or Works of Art?

Our specialists offer auction valuations every Tuesday, 9am-1pm at any of our salerooms.

Other times available by appointment or a home visit can be arranged.

Please visit
www.mallams.co.uk
or scan here:



A U C T I O N E E R S A N D V A L U E R S S I N C E 1 7 8 8

CP Home Improvements



CP Home Improvements ... just a phone call away!



*Windows & Doors
Bi-fold Doors
Conservatories
Orangeries
Soffit Facia & Guttering
Replacement Blown Units*



*Tel Call Chris on 07980 881104
Highly Recommended by the residents of Burford*



—Seth—
DIXON
• DESIGN & BUILD •

Your Planning, Building & Renovation Partner

From a simple extension, delicate renovation to a new build
Applying traditional styles within modern day building techniques
Individual bespoke ideas and plans
Vigorous cost management

Making your dreams a reality

07793 74 73 72
info@sdd-b.com www.sethddb.com

Call for a no obligation chat to discuss your plans

RADNOR MARTIN
your property buying, selling & search agency

thinking of selling your home?

We have a number of motivated buyers looking to purchase a home in Burford and the surrounding villages. If you are possibly thinking of moving in 2025 we would love to hear from you. Emma would be delighted to come and have a chat, provide a market appraisal and discuss how we can help sell your home.

01993 765115
office@radnormartin.com www.radnormartin.com
Unit 12 Tannery Yard, Witney Street, Burford, OX18 4DQ



IS YOUR HOUSE WATERTIGHT?

Get ahead of the game by calling now for a free "roof MOT".

- Get your roof inspected with photographic evidence.
- Gutters, downpipes & valleys checked & tested.
- Moss removal, treatment & solar panel washing.
- All manner of roof repairs with not scaffolding!
- Bird proofing, living roofs, loft insulation, asbestos removal.
- We are certified Velux installers, endorsed by "TrustMark"

If it's on your roof, it's our business!
Don't get caught out in the rain, get it done!

www.roofmot.com
info@roofmot.com

Call Tosh on 07928 511 444 for your free advice.
Or Forbes on 07904 229 370 to book an appointment.

Barguss
CONSTRUCTION LTD

Historic and listed building specialists

Restoration ▪ Extensions ▪ Decorating ▪ Refurbishment

The Old Bell Foundry
45 Witney Street
Burford
Oxfordshire
OX18 4RX

 **LABC Regional Winner**

Tel: 01993 824703
email: office@barguss.co.uk
web: www.barguss.co.uk

MOVE TO FEEL WELL

MATWORK:
WEDNESDAYS, FRIDAYS 9:30 AM
MONDAYS, THURSDAYS 6:00 PM

PILATES STUDIO
REHAB AND INDIVIDUAL WORK


AUDRI SCHAAY
Manual, Strength and Movement

CLINICAL & SPORTS MASSAGE
ENQUIRIES AND BOOKINGS:
07741 182858 - audri@audrischaay.com
CREEZE FARM, UNIT 1
TERRING CULTURE

 Hickman Brothers Landscapes Ltd

GARDEN & LANDSCAPE SUPPLIES

Shop online at www.hickmanlandscapes.co.uk



Contact us on - 01993 822226
sales@hickmanlandscapes.co.uk

Opening Times

Monday - Friday 07:30 - 17:00
Saturday 08:00 - 14:00

SKIP & PLANT HIRE


LEVEL LOAD
01993 822226
HICKMAN SKIPS
www.hblshop.co.uk
GARDEN & LANDSCAPE SUPPLIES

Hickman Bros Landscapes, Shipton Hill, Fulbrook, Burford, OX18 4BZ





Amanda Hanley

*Bespoke Interior Design
with Showroom in Burford*

Upholstery & Furnishing • Fabrics • Bespoke Kitchens & Cabinetry • Furniture

33 High Street, Burford, OX18 4QA

01993 822 680 07976 353 996 amanda@amandahanley.co.uk www.amandahanley.co.uk